



# Verastream Host Integrator 6.6

## New Release Further Aids Legacy Participation in SOAs

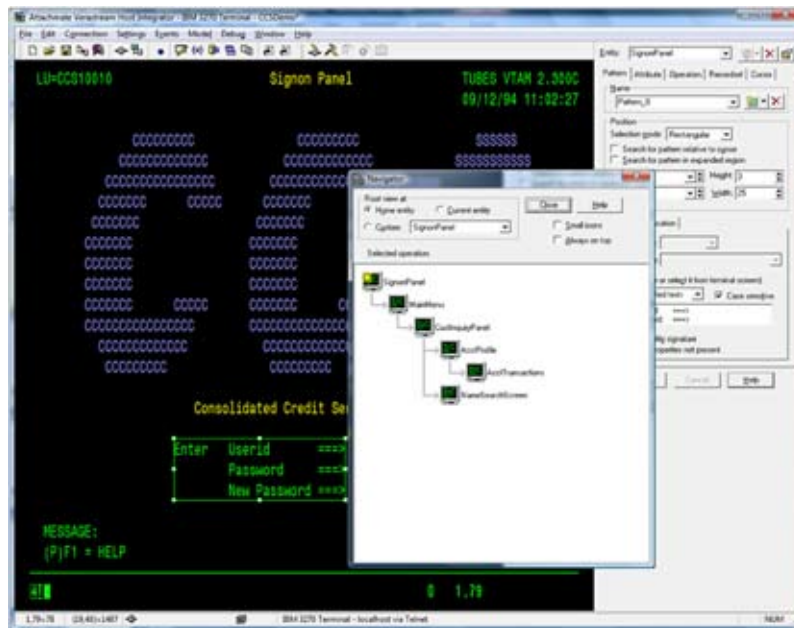
Today's IT organizations need maximum agility to meet the dynamic needs of the business. To achieve maximum agility in a cost-effective manner, IT organizations are implementing Service-Oriented Architecture (SOA). By implementing SOA, organizations can break up large legacy applications into more flexible and reusable application components. However, most legacy applications are mission-critical to the business and contain many complex business processes.

Integrating these applications into an SOA environment has typically required significant specialized skills and knowledge. Verastream Host Integrator 6.6 from Attachmate removes many of these challenges and introduces several new enhancements to simplify the process.

### The Verastream Solution

Verastream Host Integrator quickly delivers Web- or service-enablement of mainframe information using a graphical tool with point-and-click simplicity. Verastream transforms legacy applications into SOA assets by exposing business processes as Web services, XML, Java, or .NET components that can be mixed, matched, and reused to build composite applications.

By enabling mainframe-based legacy applications to participate in today's SOAs, Verastream Host Integrator helps IT organizations extend legacy functionality to the Web, portals, Customer Relationship Management (CRM), mobile, contact centers, or Web self-service solutions. Since Verastream Host Integrator permits the reuse of existing development skills, familiar IT tools, and proven mainframe investments, the product delivers rapid results. Whether your environment is IBM System z (S/390), IBM iSeries (AS/400), UNIX, OpenVMS, or HP e3000, Verastream can give your users a new look and feel, without disturbing mainframe application code or associated business processes.



Verastream's design tools capture business processes and workflow that are quickly published as reusable services or applications.

### Verastream Host Integrator 6.6

The newest release of Verastream Host Integrator—release 6.6—includes several new additions, further enhancing the product's ability to simplify and speed the participation of legacy applications in SOAs. These include:

- Enhanced Model Import to permit multiple developers to work on a single project or within a single model and the ability to import needed

- portions of one project into other projects
- Windows 2008 support
- Native .NET Client support making the use of Verastream Host Integrator transparent with respect to 32- and 64-bit operating systems and future client applications that also are backward-compatible with previous code
- FIPS validated crypto libraries that are recorded on the National Institute of Standards and Technology Website
- WS-I-compliant Web services to accommodate the ever-newer standards and capabilities of the Web services specification.

### Bottom Line

Verastream Host Integrator 6.6 eliminates most of the technical complexity and invasive code surgery associated with typical integration paradigms. Within minutes, organizations can extend the scope of their integration capabilities into the most difficult legacy environments. With its support for standards and a broad array of legacy systems, Verastream Host Integrator 6.6 can play the perfect host for SOA projects. **Z**

Verastream Host Integrator 6.6 is available from Attachmate Corp., 1500 Dexter Ave. North, Seattle, WA 98109. Voice: 800-872-2829; Website: [www.attachmate.com](http://www.attachmate.com). For a Verastream Host Integrator demo, go to [www.attachmate.com/info/verastream-demo/](http://www.attachmate.com/info/verastream-demo/).